



Overall EV Charging Solution Provider

XINYA DONGFANG ELECTRICITY TECHNOLOGY CO., LTD

TEL: 0577-62998799

Website: www.xinya-ee.com

Email: michaelyang@xinya-ee.com

Email: info@xinya-ee.com

Phone: +86-13008827427

Zhejiang Headquarters Factory:

Address: No.2, Changjiang Road, Wenzhou Daqiao Industrial Park, Beibaixiang Town, Yueqing City, Wenzhou City, Zhejiang Province

Shenzhen Branch Office:

Address: 4th floor, Chunsheng Building, Green Valley Industrial Park, Tongtou Road, Shiyan Town, Baoan District, Shenzhen City





About Us

Xinya Dongfang Electricity Technology Co., Ltd. was founded in 2016, as a top EV charger manufacturer and a high-tech enterprise backed by it's strong parent company (Stock Code: 605277). Headquartered in Wenzhou with a branch in Shenzhen, our factory takes up 150,000m² and boasts a building area of 400,000m².

We specialize in the photovoltaic energy storage and charging industry, wholeheartedly providing high-quality and reliable charging equipment and solutions for new energy vehicle manufacturers, charging station construction and operation operators, as well as various engineering new energy supporting facilities, holding numerous patents for AC and DC EV chargers.

Our products are CE and TUV certified. With a commitment to research, development, production, sales, we offer reliable services globally and tailor-made solutions for station design, manufacturing and operation.

Certification



AC Series

AC Portable 3.5 kW



Optional

- Type 1, Type 2, GB/T, Tesla
- App (WiFi+Bluetooth)

- LED indicator
- Current adjustable
- Schedule Charging
- Bracket
- Carry Bag
- Holder

Input / Output Voltage	Single-phase AC230±20% (L+N+PE)
Frequency	50/60Hz
Input / Output Current	Max. 16A (6A, 8A, 10A, 13A, 16A adjustable)
Operating Temperature	-30-+50°C

AC Series

AC Portable 7 kW



Optional

- Type 1, Type 2, GB/T, Tesla
- App (WiFi+Bluetooth)

- 2.8-inch Screen
- Current adjustable
- Schedule Charging
- Bracket
- Carry Bag
- Holder

Input / Output Voltage	Single-phase AC230±20% (L+N+PE)
Frequency	50/60Hz
Input / Output Current	Max. 32A (6A--32A adjustable)
Operating Temperature	-30-+50°C

AC Series

AC Portable 11/22 kW



Optional

- Type 1, Type 2, GB/T, Tesla
 - App (WiFi+Bluetooth)
-
- 2.8-inch Screen
 - Current adjustable
 - Schedule Charging
 - Bracket
 - Carry Bag
 - Holder

Input / Output Voltage	Three-phase AC400±20% (L1+L2+L3+N+PE)
Frequency	50/60Hz
Input / Output Current	11 kW Max. AC 16A (6-16A adjustable) 22 kW Max. AC 32A (6-32A adjustable)
Operating Temperature	-30-+50°C

AC Series

AC Portable 7/11/22 kW



Optional

- Type 1, Type 2, GB/T, Tesla
 - App (WiFi+Bluetooth)
-
- 2.8-inch Screen
 - Current adjustable
 - Schedule Charging
 - Bracket
 - Carry Bag
 - Holder

Input / Output Voltage	Single-phase AC230±20% (L+N+PE) Three-phase AC400±20% (L1+L2+L3+N+PE)
Frequency	50/60Hz
Input / Output Current	7 kW Max. AC 32A (6-32A adjustable) 11 kW Max. AC 16A (6-16A adjustable) 22 kW Max. AC 32A (6-32A adjustable)
Operating Temperature	-30-+50°C

AC Series

AC Wallbox 7/11/22 kW



Type 1 Type 2 GB/T

Features:

- Perfect charging protection such as input over/under voltage, connection abnormality, emergency stop, lightning, leakage etc.
- Compact and smart, easy to install, ideal for city resident
- Start/Stop charging by RFID card
- RCD Type A+6mA DC

Model	XY AC-E22-7KW-J	XY AC-E22-11KW-J	XY AC-E22-22KW-J	
Electrical Parameters	Power Connection	1P+N+PE	3P+N+PE	3P+N+PE
	Input/ Output Voltage	230VAC±10%	400VAC±10%	400VAC±10%
	Frequency	50HZ±10%	50HZ±10%	50HZ±10%
	Rated Power	7 kW	11 kW	22 kW
	Rated Current	32A	16A	32A
General Specifications	Charging Standard	IEC61851-1, IEC62196-22		
	AC Plugs	IEC62196-2, AC Type2		
	RCD	Type A+6mA DC		
	RFID System	Mifare (Classic, DesFire EV1) or others on request		
	Communication	GPRS /LAN/Wi-Fi (optional)		
	Communication Protocols	Customizable		
	Place of Installation	Indoor and outdoor		
	Altitude	2000m		
	Waterproof Standard	IP65		
	Operating Temperature	-20-50℃ (Derating over 50℃)		
	Storage Temperature	-40-70℃		
	Humidity	5%-95% without condensation		
	Cooling Mode	Natural cooling		
	Length of Charging Cable	4m (optional)		
Dimensions(W*D*H)	190*100*358mm			

AC Series

AC Wallbox 7 kW



Type 1



Type 2



GB/T

Features:

- Compact design, delicate appearance
- Start/Stop charging by RFID card/APP/Plug&Play
- RCD TypeA+6mA DC
- 4.3" touch screen, friendly interface

Model		XY AC-E7KW-P
Electrical Parameters	Power Connection	1P+N+PE
	Input/Output Voltage	230VAC±10%
	Frequency	50HZ±10%
	Rated Power	7 kW
	Rated Current	32A
General Specifications	Charging Standard	IEC 61851-1, IEC 62196-22
	AC Plugs	IEC 62196-2 AC Type2
	RCD	Type A+6mA DC
	Display	4.3" TFT Color touch screen
	RFID System	Mifare (Classic, DesFire EV1) or others on request
	Communication	GPRS / LAN / Wi-Fi (optional)
	Communication Protocols	customizable
	Place of Installation	Indoor and outdoor
	Altitude	2000m
	Waterproof Standard	IP54
	Operating Temperature	-20-50°C (Derating over 50°C)
	Storage Temperature	-40-70°C
	Humidity	5%-95% without condensation
	Cooling Mode	Natural cooling
Length of Charging Cable	4m(optional)	
Dimensions(W*D*H)	185*80*270mm	

AC Series

AC Wallbox 14 kW



Type 1 Type 2 GB/T

Features:

- Perfect charging protection such as input over/under voltage, connection abnormality, emergency stop, lightning, leakage etc.
- Commercial use with intelligent App control function
- Robust enclosure, high compatibility
- OCPP 1.6J function

Model		XY AC-E14KW
Electrical Parameters	Power Connection	1P+N+PE
	Input Voltage	220VAC±10%
	Rated Power	14 kW
	Rated Current	32A
	Frequency	45-65Hz
General Specifications	Charging Standard	IEC 61851-1, IEC 62196-22
	AC Plugs	IEC 62196-2 AC Type2
	Display	4.3" TFT Color touch screen
	RFID System	Mifare (Classic, DesFire EV1) or others on request
	Communication	GPRS / LAN / Wi-Fi (optional)
	Communication Protocols	OCPP1.6
	Place of Installation	Indoor and outdoor
	Cooling Mode	forced air cooling
	Altitude	2000m
	Waterproof Standard	IP54
	Operating Temperature	-20~50°C (Derating over 50°C)
	Storage Temperature	-40~70°C
	Humidity	5%~95% without condensation
	Cooling mode	Natural cooling
	Length of Charging Cable	4m (optional)
	Dimensions (W*D*H)	280*100*400mm

AC Series

AC Wallbox 7/11/22 kW



Features:

- Perfect charging protection such as input over/under voltage, connection abnormality, emergency stop, lightning, leakage etc.
- Compact and smart, easy to install
- RCD TypeA+6mA DC
- Wall-mount/Floor-stand installation

Model	XY AC-E7KW	XY AC-E11KW	XY AC-E22KW	
Electrical Parameters	Power Connection	P+N+PE	3P+N+PE	3P+N+PE
	Input/Output Voltage	230VAC±10%	400VAC±10%	400VAC±10%
	Frequency	50HZ±10%		
	Rated Power	7 kW	11 kW	22 kW
	Rated Current	32A	16A	32A
General Specifications	Charging Standard	IEC 61851-1, IEC 62196-22		
	AC Plugs	IEC 62196-2 AC Type2		
	RCD	Type A+6mA DC		
	Display	4.3" TFT Color touch screen		
	RFID System	Mifare (Classic, DesFire EV1) or others on request		
	Communication	GPRS / LAN / Wi-Fi (optional)		
	Communication Protocols	Customizable		
	Place of Installation	Indoor and outdoor		
	Altitude	2000m		
	Waterproof Standard	IP54		
	Operating Temperature	-20-50°C (Derating over 50°C)		
	Storage Temperature	-40-70°C		
	Humidity	5%-95% without condensation		
	Cooling Mode	Natural cooling		
	Length of charging Cable	4m (optional)		
Dimensions(W*D*H)	224*100*320mm	280*100*400mm		

DC Series

DC Wallbox 40 kW



CCS1 CCS2 CHAdeMO GB/T

Features:

- Modular design, flexible configuration and easy maintenance
- High degree of protection and wide voltage output ranging from 200-1000V
- DC Fast charging, time saving
- Support CCS/CHAdeMO/GBT charging standard
- Support WiFi/Ethernet/4G communication

Model		XY DC-EG40P-40KW
Nominal Input	Power Connection	3P+N+PE
	Voltage Frequency	400VAC±10%; 45~65Hz
	Total Harmonic Wave Factor	THD<5%
	Power Factor	≥0.99
Output Parameters	Voltage	200-750/1000Vdc
	Max. Current	133A
	Max. Power	40 kW
	Steady Current Precision	±0.5%
	Output Current Precision	≤±1%(≥30A) ≤0.3A(<30A)
	Output Voltage Precision	±0.5%
	Efficiency	≥94%
General Specifications	Charging Standard	EN/IEC 61851-1, EN/IEC 61851-21, EN/IEC 61851-23
	DC Plugs	IEC 62196-3
	Display	4.3" TFT Color touch screen
	RFID System	Mifare (Classic, DesFire EV1) or others on request
	Communication	GPRS /LAN /Wi-Fi (optional)
	Communication Protocols	OCPP1.6
	Place of Installation	Outdoor
	Cooling Mode	forced air cooling
	Altitude	2000m
	Waterproof Standard	IP54
	Operating Temperature	-20~50℃ (Derating over 50℃)
	Storage Temperature	-40~70℃
	Humidity	5%-95% without condensation
	Sound Noise	<65 dB in all directions
	Length of Charging Cable	5m (optional)
Dimensions (W*D*H)	560mm*260mm*610mm	

DC Series

DC Portable 20/40 kW



CCS1 CCS2 CHAdeMO GB/T

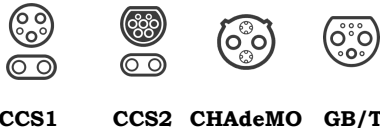
Features:

- Perfect charging protection such as input over/under voltage, connection abnormality, emergency stop, lightning, leakage etc.
- High degree of protection and wide voltage output ranging from 200-1000V
- Support RFID/APP/Plug&Play
- Simple operation, steady performance

Model		XY DC-EY40-20KW	XY DC-EY40-40KW
Nominal Input	Power Connection	3P+N+PE	
	Voltage & Frequency	400VAC±10%; 45~65Hz	
	Total Harmonic Wave Factor	THD<5%	
	Power Factor	≥0.99	
Output Parameters	Voltage	200-1000Vdc	
	Max. Current	50A	100A
	Max. Power	20 kW	40 kW
	Steady Current Precision	±0.5%	
	Output Current Precision	≤±1%(≥30A) ≤0.3A(<30A)	
	Output Voltage Precision	±0.5%	
	Efficiency	≥94%	
General Specifications	Charging Standard	EN/IEC 61851-1, EN/IEC 61851-21, EN/IEC 61851-23	
	DC Plug	IEC 62196-3	
	Display	4.3" TFT Color touch screen	
	RFID System	Mifare (Classic, DesFire EV1) or others on request	
	Communication	GPRS /LAN/Wi-Fi (optional)	
	Communication Protocols	OCPP1.6	
	Place of Installation	Indoor and outdoor	
	Cooling Mode	forced air cooling	
	Altitude	2000m	
	Waterproof Standard	IP32	
	Operating Temperature	-20~50℃ (Derating over 50℃)	
	Storage Temperature	-40~70℃	
	Humidity	5%~95% without condensation	
	Sound Noise	<65 dB in all directions	
	Length of charging Cable	5m (optional)	
	Dimensions (W*D*H)	500*260*550mm	

DC Series

DC All-in-One 60/120 kW



CCS1 CCS2 CHAdeMO GB/T

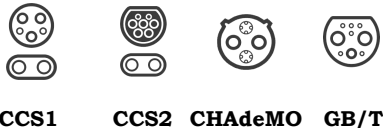
Features:

- Modular design, flexible configuration and easy maintenance
- High degree of protection and wide voltage output ranging from 200-1000V
- DC Fast charging, time saving
- RFID card/QR code payment supported
- WiFi/Ethernet/4G supported

Model	XY DC-E120-60KW	XY DC-E120-120KW	
Nominal Input	Power Connection	3P+N+PE	
	Voltage & Frequency	400VAC±10%; 45~65Hz	
	Total Harmonic Wave Factor	THD<5%	
	Power Factor	≥0.99	
Output Parameters	Voltage	200-750/1000Vdc	
	Max. Current	100A*2	200A*2
	Max. Power	60 kW	120 kW
	Steady Current Precision	±0.5%	
	Output Current Precision	≤±1%(≥30A) ≤0.3A(<30A)	
	Output Voltage Precision	±0.5%	
	Efficiency	≥94%	
General Specifications	Charging Standard	EN/IEC 61851-1, EN/IEC 61851-21, EN/IEC 61851-23	
	DC Plugs	IEC 62196-3	
	Display	7" TFT Color touch screen	
	RFID System	Mifare (Classic, DesFire EV1) or others on request	
	Communication	GPRS /LAN/Wi-Fi (optional)	
	Communication Protocols	OCPP1.6	
	Place of Installation	Outdoor	
	Cooling Mode	forced air cooling	
	Altitude	2000m	
	Waterproof Standard	IP54	
	Operating Temperature	-20~50℃ (Derating over 50℃)	
	Storage Temperature	-40~70℃	
	Humidity	5%~95% without condensation	
	Sound Noise	<65 dB in all directions	
	Length of Charging Cable	5m (optional)	
	Dimensions (W*D*H)	700mm*600mm*1500mm	

DC Series

DC All-in-One 160/180/240 kW



Features:

- Modular design, flexible configuration and easy maintenance
- High degree of protection and wide voltage output ranging from 200-1000V
- DC Fast charging, time saving
- RFID card/QR code payment supported
- WiFi/Ethernet/4G supported

Model	XY DC-E240-160KW	XY DC-E240-180KW	XY DC-E240-240KW	
Nominal Input	Power Connection			3P+N+PE
	Voltage & Frequency			400VAC±10%; 45-65Hz
	Total Harmonic Wave Factor			THD<5%
	Power Factor			≥0.99
Output Parameters	Voltage			200-1000Vdc
	Max. Current			200A*2
	Max. Power			160 kW 180 kW 240 kW
	Steady Current Precision			±0.5%
	Output Current Precision			≤±1%(≥30A) ≤0.3A(<30A)
	Output Voltage Precision			±0.5%
	Efficiency			≥94%
General Specifications	Charging Standard			EN/IEC 61851-1, EN/IEC 61851-21, EN/IEC 61851-23
	DC plugs			IEC 62196-3
	Display			7" TFT Color touch screen
	RFID System			Mifare (Classic, DesFire EV1) or others on request
	Communication			GPRS / LAN / Wi-Fi (optional)
	Communication Protocols			OCPP1.6
	Place of Installation			Outdoor
	Cooling Mode			forced air cooling
	Altitude			2000m
	Waterproof Standard			IP54
	Operating Temperature			-20-50°C (Derating over 50°C)
	Storage Temperature			-40-70°C
	Humidity			5%-95% without condensation
	Sound Noise			<65 dB in all directions
	Length of Charging Cable			5m (optional)
Dimensions (W*D*H)			710*630*1700mm	

DC Series

DC All-in-One 120/160/180 kW



CCS1 CCS2 CHAdeMO GB/T

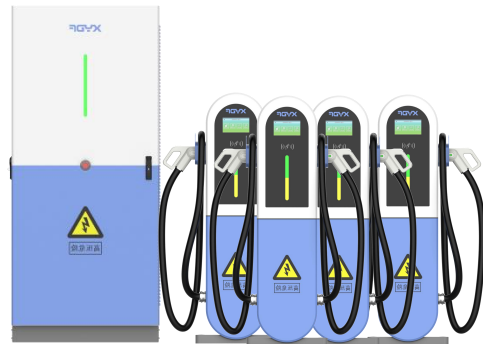
Features:

- Modular design, flexible configuration and easy maintenance
- High degree of protection and wide voltage output ranging from 200-1000V
- Fast charging, time saving
- RFID card/QR code/credit card payment supported
- WiFi/Ethernet/4G supported

Model		XY DC-E180-120KW	XY DC-E180-160KW	XY DC-E180-180KW
Input Parameters	Power Connection	3P+N+PE		
	Voltage & Frequency	400VAC±10%;45~65Hz		
	Total Harmonic Wave Factor	THD<5%		
	Power Factor	≥0.99		
Output Parameters	Voltage	200-1000Vdc		
	Max. Current	250A*2		
	Max. Power	120 kW	160 kW	180 kW
	Steady Precision Current	±0.5%		
	Output Precision Current	≤±1%(≥30A) ≤0.3A(<30A)		
	Output Precision Voltage	±0.5%		
	Efficiency	≥94%		
General Specifications	Charging Standard	EN/IEC 61851-1, EN/IEC 61851-21, EN/IEC 61851-23		
	DC Plugs	IEC 62196-3		
	Display	7" TFT Color touch screen		
	RFID System	Mifare (Classic, DesFire EV1)or others on request		
	Communication	GPRS /LAN/Wi-Fi (optional)		
	Communication Protocols	OCPP1.6		
	Place of Installation	Outdoor		
	Cooling Mode	forced air cooling		
	Altitude	2000m		
	Waterproof Standard	IP54		
	Operating Temperature	-20~50℃(Derating over 50℃)		
	Storage Temperature	-40~70℃		
	Humidity	5%~95% without condensation		
	Sound Noise	<65 dB in all directions		
	Length of Charging Cable	5m (optional)		
	Dimensions(W*D*H)	750*550*1700mm		

DC Series

DC Split Type 320/480kW



CCS1 CCS2 CHAdeMO GB/T

Features:

- High degree of protection and wide voltage output from 200-1000V
- Single / Dual-connector terminal optional
- Ring flexible power distribution design, full and reasonable use of idle module resources, maximizing the charging benefits.
- Energy-saving design, greatly reduce the standby power consumption

Model	XY DC-E480-8F-320KW	XY DC-E480-8F-480KW	
AC Input Parameters	System Power	320 kW	480 kW
	AC Input Voltage	400Vac	
	AC Power Frequency	50/60Hz	
	Input Power Factor	>0.99	
System Output Parameters	Total Harmonic Factor	THD<5%	
	Output Voltage	200~750/1000Vdc	
	Number of Output Plugs	8	
	Output	Maximum any single plug output current: 250A	
	Stable Flow Accuracy	±0.5%	
	Output Current Error	±1% (at 30A)	
		0.3A (when<30A)	
	Output Voltage Error	±0.5%	
	Peak Efficiency	≥95%	
	Essential Parameter	RFID System	Mifare (Classic, DesFire EV1) or others on request
Communication		GPRS / LAN/Wi-Fi (optional)	
Defensive Function		Input under voltage,output over voltage, over current,short circuit Over temperature, under voltage alarm,leakage protection, abnormal connection,battery reverse connection,emergency shutdown and other protection functions	
Communication Protocols		OCPP1.6	
Charging Standard		EN/IEC 61851-1, EN/IEC 61851-21, EN/IEC 61851-23	
DC Plugs		IEC 62196-3	
Split Cabinet Screen Size		7 Inches	
Noise		≤65 dB	
Place of Installation		Outdoor	
Waterproof Standard		IP 54	
Work Temperature		-20~+50℃	
Storage Temperature		-40~70℃	
Cooling Mode		forced air cooling	
Humidity	5%~95% without condensation		
Altitude	<2000m		
Length of Charging Cable	5m (optional)		
Split Volume (W*D*H)	350mm*200mm*1400mm		
Volume of Main Cabinet (W*D*H)	900mm*900mm*2050mm		

Project Cases



➤ XYDF “PV+BESS+EV Charger” System

1. Charging System: It's planned to build a total of 16 new charging parking spaces. Equipped with two 120kW DC chargers (dual-connector) and two 14 kW AC chargers.

2. PV System: The carport area is 272 square meters. The top space of the parking space is used to install PV modules to maximize the introduction of green electricity and achieve the purpose of energy saving and consumption reduction. The modules use a total of 108 550 Wp double-sided modules, with a total installed capacity of 59.4 kWp.

3. BESS System: using 125kW/215kWh energy storage cabinet

Advantages:

- Environmentally friendly
- Reduce the impact on the grid

Project Cases



- Guangzhou Jingdong Logistics Park special charging station, with a patent design, can be used for large freight logistics vehicles, taxis, cars. With a total of 36 DC chargers, the charging station can meet the charging needs of 36 electric vehicles at the same time

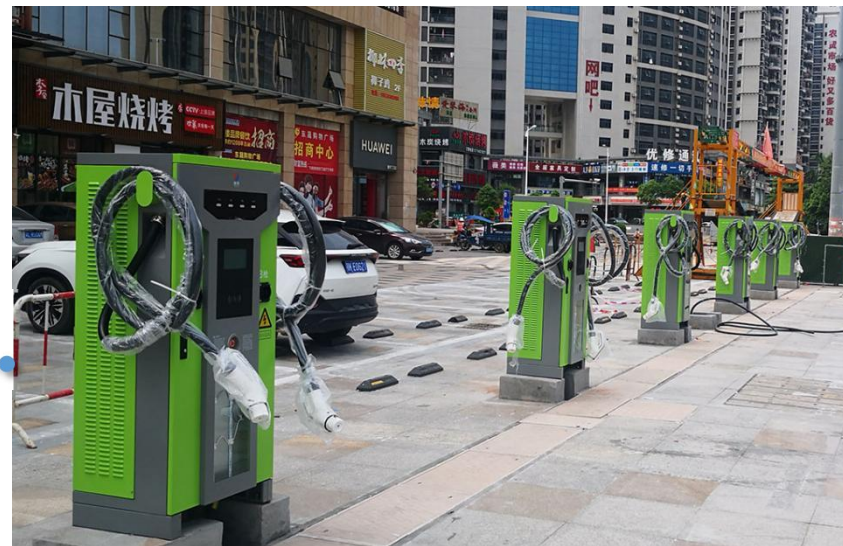
Charger Type: 60 kW DC charger

- Suitable for taxi, logistics vehicles;
- Monthly sales of 180,000 kWh;
- Convenient appointments operation in APP

- The project used 10 sets of 160 kW DC chargers and 12 sets of 120 kW DC chargers. The charging station can meet the charging needs of 44 electric vehicles at the same time.

Charger Type: 120 kW DC charger & 160 kW DC charger

- Suitable for taxi, logistics vehicles;
- Monthly sales of 180,000 kWh;
- Convenient appointments operation in APP



Project Cases



Project Cases

